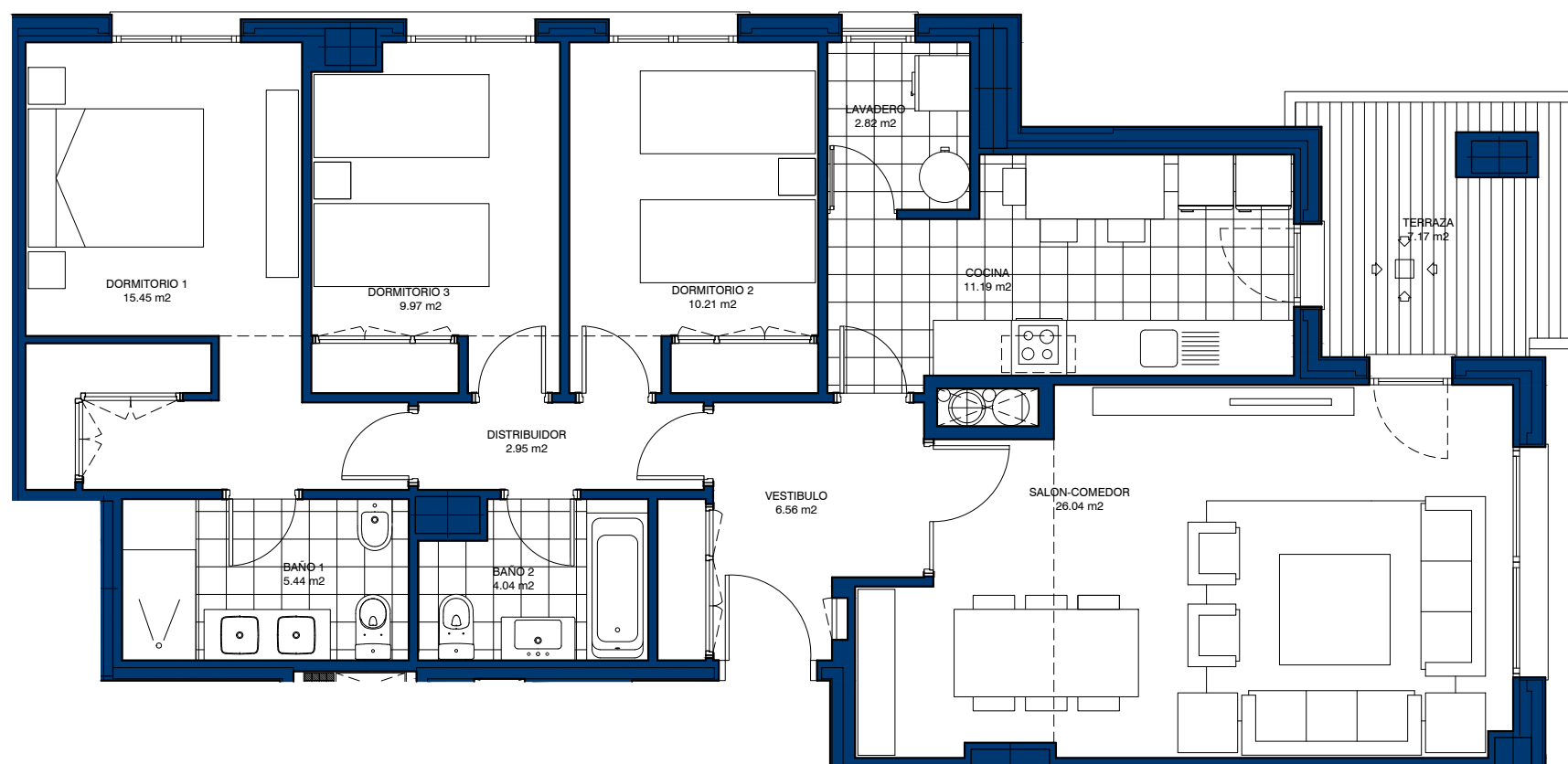


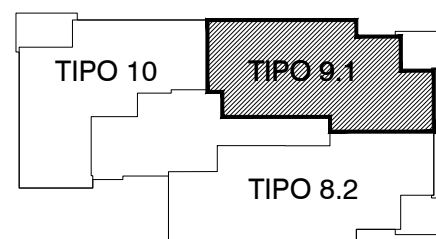
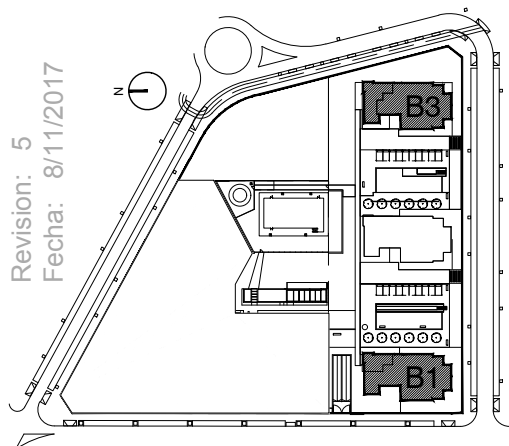
VIVIENDA TIPO 9.1

Bloque 1 y 3 . Planta 2ª a 5ª

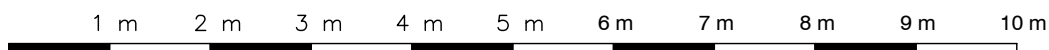


DEPARTAMENTO TECNICO

Revision: 5  
Fecha: 8/11/2017



Escala 1 : 75



|                            | TIPO 9.1                   |
|----------------------------|----------------------------|
| VESTIBULO                  | 6,56 m <sup>2</sup>        |
| COCINA                     | 11,19 m <sup>2</sup>       |
| LAVADERO                   | 2,82 m <sup>2</sup>        |
| SALON-COMEDOR              | 26,04 m <sup>2</sup>       |
| DISTRIBUIDOR               | 2,95 m <sup>2</sup>        |
| BAÑO 1                     | 5,44 m <sup>2</sup>        |
| BAÑO 2                     | 4,04 m <sup>2</sup>        |
| DORMITORIO 1               | 15,45 m <sup>2</sup>       |
| DORMITORIO 2               | 10,21 m <sup>2</sup>       |
| DORMITORIO 3               | 9,97 m <sup>2</sup>        |
| DORMITORIO 4               |                            |
| <b>TOTAL UTIL INTERIOR</b> | <b>94,67 m<sup>2</sup></b> |

|                            |                             |
|----------------------------|-----------------------------|
| UTIL EXTERIOR TERRAZA      | 7,17 m <sup>2</sup>         |
| <b>TOTAL UTIL VIVIENDA</b> | <b>101,84 m<sup>2</sup></b> |
| PART. PROP. ZZ.CC.         | 26,94 m <sup>2</sup>        |
| <b>CONSTRUIDA TOTAL</b>    | <b>138,55 m<sup>2</sup></b> |
| CONSTR. TERRAZA CUB.       | 8,12 m <sup>2</sup>         |

|                                    |                       |
|------------------------------------|-----------------------|
| <b>Según Decreto BOJA 218/2005</b> |                       |
| TOTAL SUP. UTIL                    | 98,26 m <sup>2</sup>  |
| TOTAL SUP CONSTRUIDA               | 146,67 m <sup>2</sup> |